

"Deeper - Deeper"



A WEEKEND EXPERIENCE FOR PRESENTING COUPLES

Do you remember what happened for you on your Weekend? The Holy Spirit came down in a powerful way and you were called to serve in a ministry called Marriage Encounter. It was wonderful! You went on your Deeper Weekend for future presenters and were blessed even further in profound ways. How long ago was that? Have there been times when you would like to go back and relive that weekend again? Maybe you are like many other presenting couples who have wondered why LME hasn't done more to feed those who minister by presenting on the weekends. District IV has decided to spring into action and do something about it.

On February 21-23, 2003 in Phoenix, AZ, District IV is conducting a "Deeper-Deeper"! That's right—a Deeper using the new outlines for the current presenting couples. While most of the spaces will be taken by District IV couples, we will have room for 9 additional presenting couples to attend. The weekend will be held at the Embassy Suites Hotel in Phoenix and will cost \$250 per couple, plus transportation expenses. This special event will provide you with an exceptional opportunity to experience, renew, and refresh yourselves in the Spirit of this wonderful ministry. Besides the Weekend experience, Phoenix is a nice place to visit when it's cold and snowy in other parts of the country.

Rooms will be reserved on a first come, first served basis. A waiting list will be kept in case of cancellations. We are excited about this great opportunity to grow as couples and as a community of lovers. We invite you to join us as we search for more "new adventures" in the calling we all share in the Lord's service.

Fill out the attached reservation form and send it in quickly,
as we expect the weekend to fill up fast!

DEEPER—DEEPER Registration Form

Phoenix, AZ - February 21-23, 2003 - Hosted by District IV

NAME _____
his hers last PH _____ Email _____

ADDRESS _____
street city state zip

Transportation _____ Driving _____ Airline _____ Flt# _____ Time _____

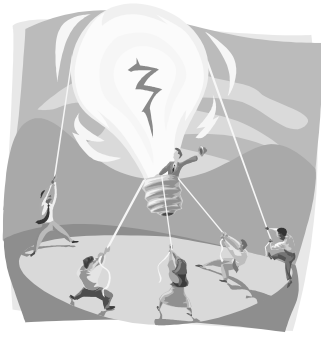
Room preference _____ Non-smoking _____ Smoking

Food Allergies _____

\$250 check enclosed _____

(Make check payable to "Lutheran Marriage Encounter". You will receive a confirmation letter upon receipt of this registration form.) Send completed form and check to:

James ♥ Barbara Brink
3109 Flintridge Drive
Bakersfield, CA 93306
661-871-6270
jandb18@pacbell.net



Need Ideas?

Hi, lovers! Looking for some new resources to spice

up your dialogue or your next love circle meeting, or to make your loving task easier? You're reading the right column!

We're Duffy and Nan Guthrie from the Ohio area of District I. As your North American Region Resource Couple we are responsible for making available the many wonderful materials to enhance our marriage relationships after our weekends. Each of the next few issues of Call to Be Family will highlight some of the neat resources now available on the ILME website (<http://www.ilme.org>), as well as including one complete resource right here.

The resource included in this issue is called "Dialogue – Awareness of Our 24-Hour Relationship. It is the first evening in a set of five love circle presentations collectively entitled Dialogue Workshop. The other four in the group are as follows: "Sharing About Our Sexual Relationship in Dialogue," "Reflections Become Love Letters," "Scripture Dialogue," and "Dialogue and Attitudes." The Dialogue Workshop comes to us courtesy of the Worldwide Marriage Encounter Interfaith Board.

For those couples looking for new dialogue questions, we suggest checking out this amazing website: <http://csweb.cs.bgsu.edu/maner/dialogue/>. This site includes over 36,000 questions (wow!) in a database searchable by key words. The questions can also be brought up randomly by clicking on the "???" button on the site.



New resources for couples holding area loving tasks are also available through us, compliments of the WME Interfaith Board. (These need only slight revisions to be immediately useful – such as substituting "clergy couple" for "priest.") Prayer couple coordinators, request from us the new "Prayer Couple Procedures" file. Inviting coordinators, request the comprehensive "Inviting and Pulpit Talk Guide – A Resource for Pulpiteers."

Registration couples, have we got the best new materials to make your job easier! Ask us for "Registration-at-a-Glance Telephone Call Guide," "Operation Registration Handbook," and also the "Participant Couple Information" booklet (thanks, Golden West Area lovers in District IV!).

The resources listed here are only the tip of the iceberg. Watch this column in future issues of CTBF for additional interesting materials. Until then, we're at your service!

Nan and Duffy Guthrie were encountered in October of 1992 and have been NAR resource couple since 1995. A n active Presenting Couple, they currently serve as a registration couple in the Ohio area as well as District I finance couple. In her spare time Nan teaches elementary music and directs three choirs at their church. Duffy is very recently retired from 37 years as a shift electrician at the local Lake Erie dock company and is truly looking forward to getting to know those two new words – "spare time!" You can contact Duffy and Nan at 440-599-9090 or nguthrie@suite224.net.



DIALOGUE WORKSHOP

DIALOGUE - AWARENESS OF OUR 24 HOUR RELATIONSHIP

I. **Mentality:** Our objective in this presentation is to look at the kind of openness we bring to our dialogue, and to bring it into the other aspects of our life together. We can truly live a “dialogue way of life” when the elements that have made us close in dialogue are incorporated into the other areas of our lives together.

A. **Content:** Fifteen minutes, maximum.

1. We write to each other for a minimum of 10 minutes a day and dialogue for a maximum of 10 minutes a day. Into these twenty or so minutes a day, we bring many elements:



- a) Openness and honesty
- b) Desire to grow closer
- c) Non verbal communication
- d) Revelation of the beauty we see in each other
- e) Eagerness to share ourselves
- f) Desire to listen to and learn about one another

(These elements have brought us closer. Share how you use each of these things in your dialogue and the impact they have had on your relationship.)

2. The other hours of our lives together, when we are not dialoguing, are filled with activities: work, children, the home, encounter, sex, conversation, hobbies, church, social activities, illness, decision making, fighting, discussions, etc. The things listed above that have made us so close in dialogue and have had such a great impact on our relationship, can also bring closeness and awareness of each other into these activities and all other aspects of our relationship, if we apply them.

(Personalize briefly here by mentioning some ways that you see a need to bring dialogue elements into these activities of your life.)

3. One reason we dialogue is to learn more about our husband or wife. The information that comes out of our dialogues and love letters can be valuable guidelines as to how I can love you more, how I can please you more, how I can change behaviors that are hurting.

(Briefly mention some of the things you have learned about one another in dialogue that has helped you to love him or her in some area.)

B. **SHARING:** Fifteen minutes maximum.

Share personally on one or two of the activities or areas of your life where you see a need to bring more of the elements of dialogue. Share your experience with trying to use these elements in the areas shared on. Mention specific things you are doing.

Mention the ways you help each other in this and encourage each other.

Share what the rewards and the results of this have been for you.

III. Questions:

A. *General Sharing:* up to sixty minutes, depending on size of the group.

Share with us: “In what area(s) do we need “dialogue” elements like openness, honesty, etc. What are we doing to put more openness, etc. into this area?”

B. *Love letter and dialogue:*

“In what area of our life do I most need to open up to you? HDIFAT? (How do I feel about that?)”

COMMENTARY

MENTALITY: *This presentation is about the 23 hours a day that we are not dialoguing with each other. Our goal in dialogue is closeness, not a 20 minute a day interlude of closeness, but a growing, alive closeness and awareness of each other that is part of all the time we spend together or apart. In this presentation we look at dialogue as not just a part of our day, but rather as the 20 minutes that sets the tone for the whole day, for all of our activities.*

CONTENT:

II. A. 1. Part One points out the many ways we use to grow closer and to learn about one another in our dialogue. We want to point out that these things present in dialogue do work, they have done much for us. Specifically mention how these elements of dialogue have been rewarding for you in opening up to each other and in loving one another.

II. A. 2. Part Two points out that what works in dialogue can also work in the other areas of our lives. Mention the areas and point out how you can see that it is true that you do need the “dialogue” type openness in them. Give some specific everyday examples. (ex. Are there still some things that I choose not to talk to you about where money is concerned? Or—do I show an interest in your hobby? etc.)

II. A. 3. Part Three. Since we do dialogue on so many areas that are important in our lives, we have built up a real wealth of information about each other, information that can and should be used in order to love more and to please each other more. Personalize here by giving some specific examples of how you have learned through dialogue of a new way to love him or her. (Ex.: Knowing that he feels joyful when she meets him at the door at night, gives an example of what she can do to express her love for him.



**WEDS
WORKS**

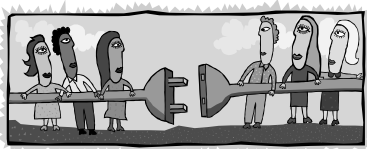


European ELME Board



ELME bord without Toril and Ulf Asp
From left.

Anne Gram-Larsen & Jan Torp Pharo, District Lay Exec Couple, Norway
Grethe Lauritsen & Vagn Lauritsen, District Lay Exec Couple, Denmark
Martina Brogmus & Sigurjón Árni Eyjólfsson, District Clergy Exec Couple, Iceland
Elfa Dröfn Ingólfsdóttir and Páll Magnússon, District Lay Exec Couple, Iceland
Agneta Franze & Hans-Joachim Franze, Region Clergy Executive Couple (Sweden)
Marianna Jyrkämä & Jouko Jyrkämä, District Clergy Exec Couple, Finland
Ebba Svensäter & Carl-Eric Svensäter, District Clergy Exec Couple (Sweden)
Anne Grethe Andersen & Torben Andersen, District Lay Exec Couple, Denmark
Anna Ålander & Kari Ålander, Region Lay Executive Couple (Finland)



**GETTING CONNECTED
and
CALLED TO BE FAMILY**

with our sister and brothers in the European ministry
of *International Lutheran Marriage Encounter*.



Lutheran Marriage Encounter Mission Statement

Lutheran Marriage Encounter is a ministry dedicated to assisting married couples to live fully intimate and responsible relationships by providing an Encounter Weekend experience as well as ongoing community support.

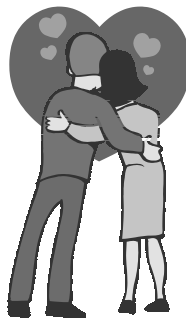
Vision Statement

The Lutheran Church renewed and our world changed through strengthened couple relationships and stronger personal relationships with Christ.

ILME Donations

Lutheran Marriage Encounter welcomes and needs your additional donations. ILME Weekend donations alone are not enough. Send a ME love donation often to your District Finance Couple to be used for the ongoing expenses of ILME.

"Our International Call to be Family" is published by International Lutheran Marriage Encounter. This newsletter does not set policy or determine practices for ILME. It is the community of couples sharing itself to increase awareness, stimulate discussion and insight. It is mailed bulk rate and is not able to be forwarded. If you are planning to move, please send your change of address as soon as possible to the Editor Couple (see National Staff listings). The newsletter is sent to all who wish to receive it. A donation of \$10.00 for the publication year (September through August) is requested. Names and addresses listed in this publication shall not be used for solicitation by any person or organization for personal or organizational gain or profit. We invite the readers to share information, thoughts and comments with the ILME Community.



LOOKING BACK AT THE ILME FAMILY REUNION AND THE ALASKA CRUISE

Hi, Marriage Encounter Family,

The International Lutheran Marriage Encounter Family Reunion held at Pacific Lutheran University in Tacoma, WA in August was great. The weather was comfortable and it was fun to see people we know and to meet lots of new people. "Dreams Have No Boundaries" opened Friday evening with a presentation on the history of ILME and some couples sharing personal stories of spiritual growth, which were followed by a 10/10 and small group sharing.

Saturday's speakers, Dr. David & Teresa Ferguson, did four presentations on God's roll in our marriage as a colleague, companion, conduit and community. Each presentation was followed by a 10/10. Saturday night we all enjoyed a nice dinner and music for the whole family. Sunday we had a presentation on "embracing the future" given by our national ILME leaders, followed by worship, group picture and lunch. The weekend also included skits, inserted at different times, a silent auction, and lots of great singing. Again the weather was perfect, the food was great and we really enjoyed the presentations on the weekend.

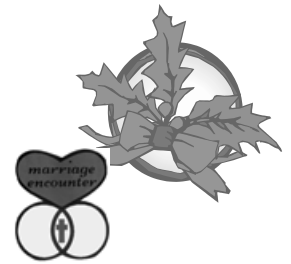
Monday morning, eight couples and the tour director went on the Alaskan cruise. Again we had great sunny weather. (Most of the time they have more rainy than sunny days.) Otto Tollefson brought along two tapes of the "Five Languages of Love" and led us in discussion. Sunday morning about 150 people attended a worship service including singing and scripture.

On Monday we said our good-byes and headed to the airport for our trips home. Now we look forward to the ILME convention in Cleveland, Ohio in 2004. We hope to see all encountered couples there.

Love,
Richard and Mavis Johnson
Publicity Couple for District III
Minneapolis, MN
Dick55369@hotmail.com



International Lutheran Marriage Encounter



ILME Clergy Exec.

Agneta and Hans-Joachim Franze
Smalandsstenar,
33332 Skogslund, Sweden
Tel: +46 371 303 46
agneta.franze@edu.gislaved.se

ILME Lay Exec.

Kari & Anna Alander
Aholaidantie
40320 Jyväskylä, Finland
Ph: +358 14 4499920
Alander@solutions.fi

EUROPEAN REGION

LAY EXEC

Kari & Anna Alander

Aholaidantie
40320 Jyväskylä
Finland
Ph: +358 14 4499920
Alander@solutions.fi

CLERGY EXEC

Agneta and Hans-Joachim Franze

Smalandsstenar, 33332 Skogslund,
Sweden
Tel: +46 371 303 46
agneta.franze@edu.gislaved.se

Australasian Outreach

LAY EXEC

Werner & Annette Wirz

10 Lightning Street
Raby, 2566 New South Wales
Australia
011-61-2-9820-1238

CLERGY EXEC

Mike & Narelle Fulwood

1 Louisa Lawson Crescent
Gilmore ACT 2905
Australia 011 61 -6-292-2159

NORWAY LAY

Anne Gram-Larsen &

Jan Torp Pharot

Hvileberget 27
1680Skjaerhallen, Norway
Tel x 479 379748
janpharo@online.no

NORWAY CLERGY

Ulf & Torill Asp

Aleveijen 3,
1322 Tonsberg, Norway
011+47 3334 7786

FINLAND LAY

Irmeli & Hari Niskanen

Aholaidantie 1
Hausjarventie 2366
12210 Hausjarvi, Finland
019 768494
Irmeli.niskanen@hausjarvi.fi

FINLAND CLERGY

Marianna & Jouko Jyrkämä

Parikanniementie 65
52320 Vitsiälä, Finland
Jjyrkama@pp.inet.fi

ICELAND LAY

Karl Geirsson & Thyri Emma

Orsteinsdottir

Svidholtsvör 1
225 Bessastadahreppi
Tel. +354 5652783
Thyrikari@islandia.is

ICELAND CLERGY

Sigurjón Árni Eyjólfsson

& Marina Brogmus

Flókagata 65
105 Reykjavík
Tel. +354 5528108

SWEDEN LAY

Eva-Marie &

Lars-Görrann Hansson

Evas v. 26
572 40 Oskarshamn, Sweden
Tel. +46 4918 3337
Hansson.oskarshamn@telia.com

SWEDEN CLERGY

Not available

DENMARK LAY

Anne Grethe & Torben Andersen

Munkeparken 101
DK-6240 Løgumkloster, Denmark
001+45 7474 4942
Agt@mail.tele.dk

DENMARK CLERGY

Ellen & Hans Henrik Merrild

Haderslevvej 1C
DK-6070 Christiansfeld, Denmark
001-45 7456 0153
Ehmmerrild@post.tele.dk

NORTH AMERICAN REGION

LAY EXEC

Jim & Anita Tollefson

1004 Elm Street
Alexandria, MN 56308
320-762-2700
pillarbb@rea-alp.com

CLERGY EXEC

Ted & Marty Hartman

1189 Riesling Circle
Livermore, CA 94550
925-449-5628
tmheart@attbi.com

DISTRICT I - LAY

Dave & Jean Fell

32915 Charmwood Oval
Solon, OH 44139
440-349-4107
Davidjeanfell@hotmail.com

DISTRICT I - CLERGY

Ed & Emily Kast

4440 Windemere Dr.
Saginaw, MI 48603
989-791-4172
Elkast@juno.com

DISTRICT II - LAY

Allen & Jeannine Gray

9837 Rockledge Road
Ft. Worth, TX 76108
AllenGray817@mybluelight.com

DISTRICT II - CLERGY

Laird & Winnie Engle

410 Depot
El Campo, TX 77437
979-578-0292
Laird-winnie@wcnet.net

DISTRICT III - LAY

Dick & Judy Dehnel

14310 Genessee Avenue
Apple Valley, MN 55124
952-432-3105 - Djdehnel@aol.com

DISTRICT III - CLERGY

Dave & Elsa Larson

2544 E. Cherry Rd.
Pickrell, NE 68422 -
Dande_larson@juno.com

DISTRICT IV - LAY

Mickey & Sandy Preston

1146 E. Jenson
Mesa, AZ 85203
480-890-9395
Mickersam@cox.net

DISTRICT IV - CLERGY

Gary & Mary Ann Harms

1145 Barham Drive, #68
San Marcos, CA 92078
760-747-4784 fax: 760-747-0322
Gamahmepas@aol.com

DISTRICT V - LAY

Mark & Kari Hooper

2315 21st Ave. Ct. NW
Gig Harbor, WA 98335
253-858-9021

DISTRICT V - CLERGY

John & Nancy Orwig

858 N. Burritt Ave,
Buffalo, WY 82834
307-684-2700
Johnnancy@vcn.com

SOUTH AMERICA/BRAZIL OUTREACH

Ottokar & Karin Bruhmuller, Lay

Rua Presidente Prudente de Moraes, 315
98218-000 Joinville, Santa Catarina, Brazil
Ottokar@netvision.com.br

Oswald & Carmen Doege, Clergy

Caixa Postal 02,
89.120-000 Timbo, Santa Catarina, Brazil
382-0070 (office)
Oswaldcbp@bol.com.br

CANADIAN FACILITATORS:

Martin & Ute Stiller

Box 5524
Leduc, Alberta T9E 2A1 Canada
780-985-8589

Call To Be Family EDITORS:

Bill and Kay Morrissey

800 Branford Road
Troy, OH 453737
937-332-1832 fax: 937-332-1942
BillnKay@woh.rr.com

**NORTH AMERICAN REGION
STAFF**

**PRESENTING COUPLE
COORDINATORS**

Jake & June Rabatin

183 River Road
Charles Town, WV 25414
304-724-6504
Jakenjune@citlink.net

FINANCE:

John & Irene Schmehl

3194 Etter Road
Chambersburg, PA 17201
717-709-0453
Jschmehl@cvn.net

SECRETARY :

Carl & Dallas Presley

4219 - 32nd Avenue. Ct. NW
Gig Harbor, WA 98335
253-851-6652
Carl.presley@weyerhaeuser.com

SUPPLIES:

Tom & Sheila Cochran

1502 Jackson Ave. NE
St. Michael, MN 55376
763-497-3675
Cochrantl@charter.net

RESOURCES :

Duffy & Nan Guthrie

549 Janet Drive
Conneaut, OH 44030
440-599-9090
Nguthrie@suite224.net

HISTORIANS:

Tom & Nancy Purcell

2531 S. Adams Rd.
Veradale, WA 99037
509-928-8393
Npurcell@Lukins.com

DEEPER COORDINATORS:

Russ & Ann Hillman

14009- 56th Ave. NW
Gig Harbor, WA 98332
253-858-3100 fax: 253-858-5924
Russannahillman@msn.com

TELECOMMUNICATIONS:

Dale & Carol Ure

1818 -East 37th Ave.
Spokane, WA 99203-4110
800-235-1010 fax: 509-456-7994
Hdclure@juno.com

**REQUESTS FOR
COPIES OF "CTBF"**

*for your Weekend Packets
should be directed to our
National Supply Couple
Tom and Sheila Cochran*

1502 Jackson Ave. NE
St. Michael, MN 55376
763-497-3675
Cochrantl@charter.net

Have you checked

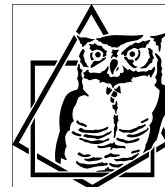
**out the extensive source of
materials designed for a
multitude of Community
uses to be found on the
ILME website?**

ilme.org

User name:

ILME Couples

Password: 1010



**WORDS
OF
WISDOM**

Thoughts on the Sabbath

"There is a pervasive form of contemporary violence...activism and overwork. To allow oneself to be carried away by a multitude of conflicting concerns, to surrender to too many demands, to commit oneself to too many projects, to want to help everyone in everything, is to succumb to violence. The frenzy of our [activity]...destroys the fruitfulness of our work, because it kills the root of inner wisdom which makes work fruitful."

— Thomas Merton



Lutheran Marriage Encounter Contact Couples



DISTRICT I

CANADA

Bev & Yvonne Strucke - Lay
716 17th St. Crescent, Hanover, ONT N4N3C7
519-364-2148
Strucke@wightman.ca

Dick & Linda Holm - Clergy
188 Edgewood Drive
Woodstock, ONT N4S 7P3
519-537-8948

FLORIDA

Bob & Grace Schmeelcke - Clergy
600 SW 48th St. Rd., Ocala, FL 34474
352-237-8264 email: PrBob1@aol.com
Marty & Lois Light - Lay
280 Willowick Way, Venice, FL 34293
941-497-4639 email: LM10n10@aol.com

MICHIGAN

Fred & Barb Roush - Lay
7366 Oneida, Charlotte, MI 48813
517-645-2266 fax: 517-645-0191
fbroush@attglobal.net
Bill & Janis Hessler - Clergy
Box 242, 4235 Williamson Rd.
Bridgeport, MI 48722-0242
989-777-2648 - HESSLERW@aol.com

MID ATLANTIC

Skip & Vicki Schempp -Lay
4237 Stirling St., Philadelphia, PA 19135
215-333-0428 - Info@crowndoor.com

NATIONAL CAPITAL

Tom & Ina Berkey - Lay
5422 Bromyard Ct.
Burke, VA 22015
703-978-8558
Berkeyx@aol.com
Randy & Tricia Casto -Clergy
4025 Willows Road
Chesapeake Beach, MD 20732
410-257-3414
Rcasto@chesapeake.net

CAROLINAS

Charlie & Billie Roach - Lay
75 Laurelwood Dr. D-97,
Marion, NC 28752
828-652-2882
Roachves@wnclink.com
Tom & Robin Cogan - Clergy
3300 Chistow Rd
Matthews, NC 28105-3747
704-563-6241
Trcogan@bellsouth.net

WESTERN PENNSYLVANIA

Fred & Julie Schamber -Lay
5095 Cherry Lane, Murrysville, PA 15668
724-325-3166 - Schamber@adelphia.net

NEW YORK / NEW ENGLAND

Bob & Linda McGurn -Clergy
17 Hampton Village Dr.
Granley, CT 06035
860-653-2173
Mcgurn@snet.net

OHIO

Kevin & Raye Guynn -Lay
6625 Ivana Ct., Mentor, OH 44060
440-974-9806
Ch_guynn@lgca.org

Jon & Bonnie Bell -Clergy
2040 Albon Road, Holland, OH 43538
419-868-8040
Bbell357@toast.net

DISTRICT II

ILLINOIS - Chicago

Dave & Jean Dobbelstein -Lay
1433 Huntington Drive
Mundelein, IL 60060-3207
847-362-2162
Davejean@ync.net

Carl & Ann Trost - Clergy
138 Boles Loop
Ft. Sheridan, IL 60037
947-926-9456
Trosts@earthlink.net

Central Illinois

Les & Penny Wright - Lay
108 N. High St., Washington, IL 61571
309-444-8762
l-pwright@juno.com

INDIANA-KENTUCKY

Dick & Marilyn Glossett -Lay
140 Dealey Drive
Convoy, OH 45863
419-749-1432
Dmglosse@aol.com

Ralph & Bev Easterhaus -Clergy
7914 W. Cook, Ft. Wayne, IN 46818
219-489-3425

MISSOURI / KANSAS / OKLAHOMA

Kansas City
Jim & Pam Bush -Lay
905 Linz Ave.
Blue Springs, MO 64014
816-229-8333
Bush905@aol.com

Jerry & Lyn Brownlee -Clergy
3901 Rustic Lane, Jefferson City, MO
65109
573-635-5969
JLBrownlee@aol.com

St. Louis

Richard & Connie Buch -Lay
211 Washington, Red Bud, IL 62278
618-282-3525
rcbuch@htc.net

Dan & Judy Teuscher - Clergy
958 Shire Lane, Eureka, MO, 63025
636-938-4730
Danjudy@aol.com

TEXAS

Austin

Richard & Sandy Giro -Lay
P.O. Box 386, Bastrop, TX 78602-0386
512-303-3537
rsgiro@iwl.net

Dallas

Herb & Betty Doller - Lay
1806 Greentree Lane, Duncanville, TX 75137
972-780-0920
Herbdoller@ticnet.com

Tom & Yolanda Thierfelder -Clergy
7109 Wills, Garland, TX 75034
972-226-4532
pastortom@integrityonline2.com

Houston

Dick & Ruth Osburn -Lay
17 Harbor Lane, Kemah, TX 77565
281-334-2476
osburnrk@iwl.net

DISTRICT III

CANADA - Saskatchewan, Manitoba

Al & Laurie Gheysens -Lay
135 5th Ave. NE, Portage la Prairie, MB
R1N 0C8 Canada
204-857-3939
tenenten@escape.ca

Gordon & Grace Hendrickson -Clergy
RR 1, Starbuck, MB, Canada, ROG 2P0
204-735-2776 fax: 204-735-2380
hendric@mb.sympatico.ca

MINNESOTA / TWIN CITIES

Jim Hedin & Rita DeBruyn—Lay
1027 Walnut Ridge Dr.
Eagan, MN 55123
651-687-9651
Ritandjim@aol.com

Orv & Bernell Moren -Clergy

10540 Redwood St.
Coon Rapids, MN 55433
763-767-0182
okmoren@juno.com

*"How do I feel about being like
Christ to you?" DFILD*

HDIF when I say, "I love you!"

DISTRICT III continued . . .

NEBRASKA / WESTERN IOWA

Al & Cheryl Northrop -Lay

422 So. 153rd Circle
Omaha, NE 68154
402-334-1060
northrop@tconl.com

Dave & Melissa Ryan -Clergy

2230 Devoe Dr.
Lincoln, NE 68506
402-488-3464
Mryan@southwoodlutheran.org

EASTERN IOWA

Mark & Norma Allen -Lay

109 Lilliput Lane
Cedar Falls, IA 50613
319-266-7993
mnallen@cfu.net

SOUTH DAKOTA

Milton & Donna Kaufman -Lay

RR 2 Box 55
Wilmot, SD 57279
605-938-4236
miltkauf@tnics.com

WISCONSIN / UPPER PENINSULA

Steve & Carol Spieker -Lay

2129 Inverness Dr.
Waukesha, WI 53186
262-574-7557
spicker@execpc.com

DISTRICT IV

ARIZONA / NEW MEXICO

Rich & Jan Schleier -Lay

8227 W. Robin Lane
Peoria, AZ 85383
623-376-6949
Schly49@aol.com

SOUTHERN CALIFORNIA

Golden West

Dick & Jane Knecht -Lay

1500 W. Oak Ave.
Fullerton, CA 92833
714-680-9722
Cspotr1@cleanweb.net

San Diego

Dennis & Wanda Dulmage -Lay

45652 Caminito Olite
Temecula, CA 92592
909-302-8644
Dulmage90@cs.com

Gary & Mary Ann Harms -Clergy

1145 Barham Dr. #68
San Marcos, CA 92078
Gamahmepas@aol.com

MID ROCKIES

John & Jennifer Pettinger -Lay

6635 W. Dartmouth Ave.
Denver, CO 80227
Jjpettinger@home.com

Lowell & Carol Hemken -Clergy

1836 Marlborough Court
Ft. Collins, CO 80526
970-482-1183
spin@lamar.colostate.edu

DISTRICT V

ALASKA

Larry & Judy Helgeson -Lay

7466 East 20th
Anchorage, AK 99504
907-338-7250
ljhelgeson@aol.com

ALBERTA

Ken & Valerie Rude -Lay

75 Sunhurst Cres. SE
Calgary, Alberta T2X 1 W5
403-281-8585
Shalom@nucleus.com

Grand Prairie Contact

Vern & Rose-Aline Begalke

9910—81 Ave.
Grand Prairie AB T8V-3T2
780-539-9956

BIG SKY

Mike & Sharon Farnsworth -Lay

30212nd Ave. N
Great Falls, MT 59401
406-761-7381
skmdFarnsworth@prodigy.net

John & Nancy Orwig - Clergy

858 North Burritt Ave.
Buffalo, WY 82834
307-684-2700
Johnnancy@vcn.com

N. CALIFORNIA / N. NEVADA

Tom & Debbie Deeble -Lay

4797 Knollcrest Ct.
Antioch, CA 94509
925-778-8977
Tdeeble@aol.com

N. UTAH / S. IDAHO

Roy & Michelle Angle -Lay

5788 Bannock Hwy
Pocatello, ID 83204
208-232-0194
RoyRangle@aol.com

Manfred & Jutta Berndt -Clergy

PO Box 4483
Hailey, ID 83333
208-578-7853
mnjberndt@aol.com

LOVING INVITATION . . .

(Requires a **LOVING** response!)

Send **POST WEEKEND LISTS**
and any **changes or corrections** on
the leadership rosters to:

Bill and Kay Morrissey
CTBF editors

BillnKay@woh.rr.com

SEND ALL UPCOMING
WEEKEND DATES & CHANGES TO:

Dale & Carol Ure

1818 E. 37th

Spokane, WA 99203

509-747-7964

Fax: 509-456-7994

hdclure@juno.com

OREGON

Paul & JoAnn Rothi -Lay

11697 South Salmonberry Dr.
Oregon City, OR 97045
503-655-6559
Rothi@teleport.com

Ron & Mavis Barth -Clergy

2532 Terrace View Dr.
Eugene, OR 97405
541-686-0870
rmbarth@earthlink.net

INLAND NORTHWEST

Laun & Teri Clem -Lay

1041 N. 21st Street
Coeur d'Alene, ID 83814
208-765-0124
TLCLEM@yahoo.com

Gary & Suzi Rohde -Lay

914 Miller Lane
Grandview, WA 98930
509-882-5172
srohde@wolfenet.com

W. WASHINGTON / BRITISH COLUMBIA

Mark & Kari Hooper

2315- 21st Ave. Ct. NW
Gig Harbor, WA 98335
253-858-9021
mark.hooper@gte.net

Russ & Ann Hillman -Clergy

14009- 56th Ave. NW
Gig Harbor, WA 98332
Russannahillman@msn.com

*"When we haven't
dialogued for a
while, I feel
DYFILD."*

IMPORTANT NOTICE!!!

Due to increased expenses in printing and mailing *Call To Be Family*, the following policy is in effect immediately:

- Issues will be mailed only to those who annually renew their subscription with a \$10 check or money order. (See back page for full instructions on how to renew.)
- Free issues will be given to each newly encountered couple for one year.



**ANY WORLDWIDE
MARRIAGE ENCOUNTER WEEKEND
CAN BE FOUND ON THE INTERNET**

at this Interfaith Address:

<http://208.130.185.51/interfaith/interfaith.htm>

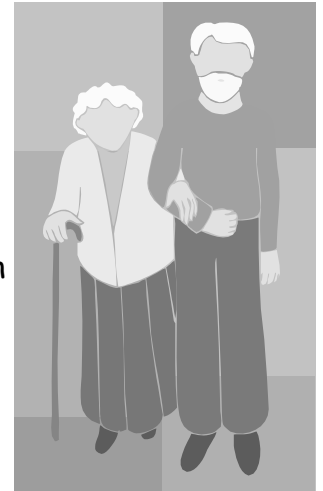
also

***"Call To Be Family"*
is available on the Internet
for ALL encountered couples:**

1. Go to the ILME Home Page: www.ilme.org
2. Click on **"Resources for Couples who have been on a ME weekend"**
2. Click on **"ILME Post Weekend material"**
3. Click on **"Download some Documents, get dialogue helps"**
(User name: ILME Couples, password: 1010)
5. On the second page, go to **"Misc. stuff that didn't quite fit other categories,"** and you will see **"Call To Be Family"**
6. After downloading, you will need the Adobe Acrobat Reader to open it. The Acrobat Reader can be downloaded from the Resource page or from www.adobe.com

The Elderly Wedding

Jacob, age 92 and Rebecca, age 89 are all excited about their decision to marry. They go for a stroll to discuss the wedding and on the way they pass a drugstore. Jacob suggests they go in.



Jacob addresses the man behind the counter, "Are you the owner?"
The pharmacist answers "Yes."
Jacob: "We're about to get married. Do you sell heart medication?"
Pharmacist: "Of course we do."
Jacob: "How about medicine for circulation?"
Pharmacist: "All kinds."
Jacob: "Medicine for rheumatism, osteoporosis?"
Pharmacist: "Definitely."
Jacob: "How about Viagra?"
Pharmacist: "Of course."
Jacob: "Medicine for memory problems, arthritis, jaundice?"
Pharmacist: "Yes, a large variety. The works!"
Jacob: "What about vitamins, sleeping pills, Geritol and Metamucil? Anything for Parkinson's disease?"
Pharmacist: "Absolutely."
Jacob: "You sell wheelchairs and walkers?"
Pharmacist: "All speeds and sizes."
Jacob looks at Rebecca, and at her approving nod, Jacob says to the pharmacist: "We'd like to register here, please."



POP QUIZ



Take this fascinating marriage quiz!

By Phil CallaY

(ChristianityToday.com)

Please answer each question honestly, bearing in mind that while it is impossible to fail this test, your answers may determine where you'll spend the night.

1. When you are wrong, you will admit it to your partner:

- A. Within seconds.
- B. Just as soon as cows produce root beer.
- C. Usually before sunset.

2. On your most recent vacation, you:

- A. Strolled sun-soaked beaches barefoot, then basked in the glow of each other's eyes.
- B. Left messages on each other's answering machines.
- C. Had to come home for a rest.

3. Which of the following most accurately describes the frequency of your love-making?

- A. Tri-weekly
- B. Try weakly
- C. Try weekly

4. Complete this sentence: I believe the Children of Israel wandered in the wilderness for 40 years because:

- A. God was testing their marriages.
- B. Moses didn't pay attention when his wife was giving directions.
- C. Moses wanted everybody to appreciate the Promised Land once they got there.

5. When you're watching TV together, who controls the remote?

- A. We do not watch television; we go for walks and talk about our feelings.
- B. I do.
- C. Whoever gets it first.

6. The food that best sums up your spouse's kiss:

- A. Red-hot chili peppers
- B. Airline omelet
- C. Hot apple pie

7. The movie title that best sums up your sex life:

- A. *Some Like It Hot*
- B. *Gone with the Wind*
- C. *As Good as It Gets*

8. (For men only.) You've just bought a late-model minivan, complete with CD player. The phone rings. It's your frenzied wife calling from Biff's Auto Repair to tell you she has totaled the van. You:

- A. Ask if she's okay.
- B. Total the telephone.
- C. Ask if she's okay—and if the CD player still works.

9. (For women only) After a particularly tough day, your husband has crashed in front of the TV set.

You decide to:

- A. Stand beside the TV set and try on lingerie.
- B. Put fiberglass insulation in his pajamas.
- C. Pour two tall ginger ales and crash with him.

10. Your definition of communication is:

- A. I am attentive to my partner's communication needs. I listen well and share openly my thoughts, aspirations, and feelings.
- B. Nintendo.
- C. Sorry, I was distracted. Could you repeat the question?

11. It's 12:30 a.m. and neither of you can sleep. Your spouse says, "Honey, I'm hungry. Would you get me a slice of cheese?" You say:

- A. "Is that all, sweetheart? How about a salad with croutons?"
- B. "Zzzzzz."
- C. "Swiss or cheddar?"

How to score:

If you answered "A" more than six times, thanks for taking this quiz during your honeymoon. We wish you all the best in the years ahead. If you found yourself gravitating to the "B" responses, take an aspirin and re-subscribe to *Marriage Partnership* in the morning. Also—find a soft pillow. You'll need it on the couch.

If you chose "C" five or more times, you've got a good thing going.

Collect 10 bonus points if you also answered "A" more than once. Sounds like some flexibility, lots of laughter, and a servant heart are keeping your marriage fresh.

Now, break out the ginger ale. It's time to try weekly!

HOW ABOUT IT? DO YOU WANT TO CONTINUE RECEIVING YOUR CALL TO BE FAMILY MAGAZINE???

When you attend a Marriage Encounter Weekend you receive this magazine for one year at no extra cost to you. After that time, in order to continue receiving *Call to be Family* you will need to send in this subscription form with a minimum donation of \$10 (US) EACH YEAR. Your donation is needed to help pay for printing, labels and mailing costs. This donation will also help to continue providing copies for all newly encountered couples.

To renew or subscribe is as simple as **A B C**:

A. Write a check for a minimum donation of \$10 (must be U.S. funds) payable to *Call to be Family*.

B. Fill in the form below.

C. Send completed form and check to : Bill ♥ Kay Morrissey
800 Branford Road
Troy, OH 45373

YES! We want to continue to receive our International *Call to be Family* magazine.

Enclosed is our check for \$_____ (**\$10 minimum U.S.**) payable to *Call to be Family*. Additional donations are welcomed to help with the expenses of publishing and mailing. THANKS!

Please print or type:

Last Name His first and Her first

Street address

City/Locality State/Province Postal Code Country

Call to be Family
Lutheran Marriage Encounter
13273 Hayes Road
Middlefield, OH 44062

Non-Profit Organization
U.S. Postage
PAID
Mentor, Ohio
Permit No. 257

